

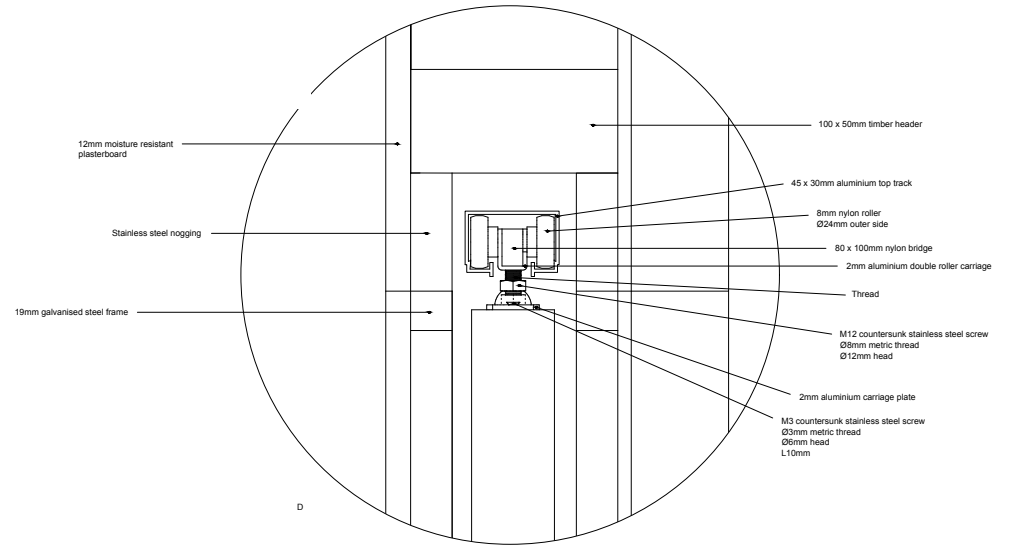
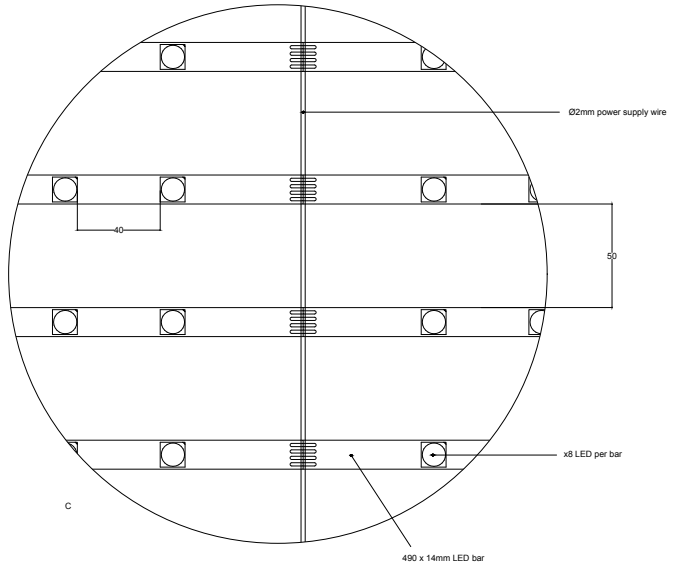
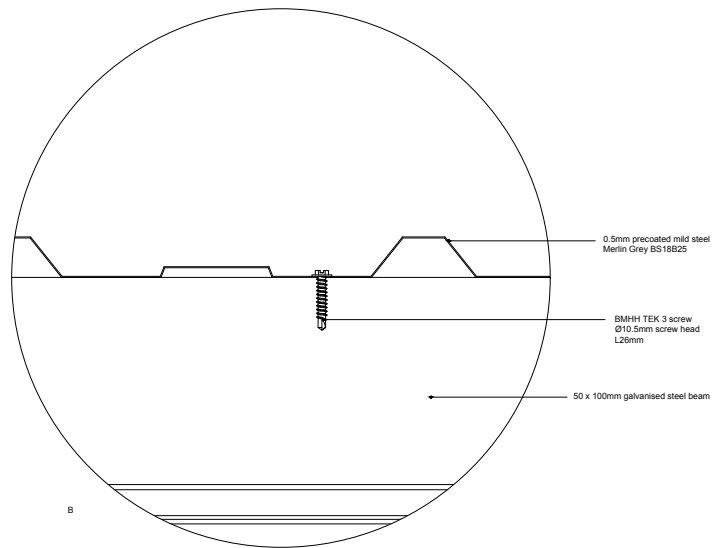
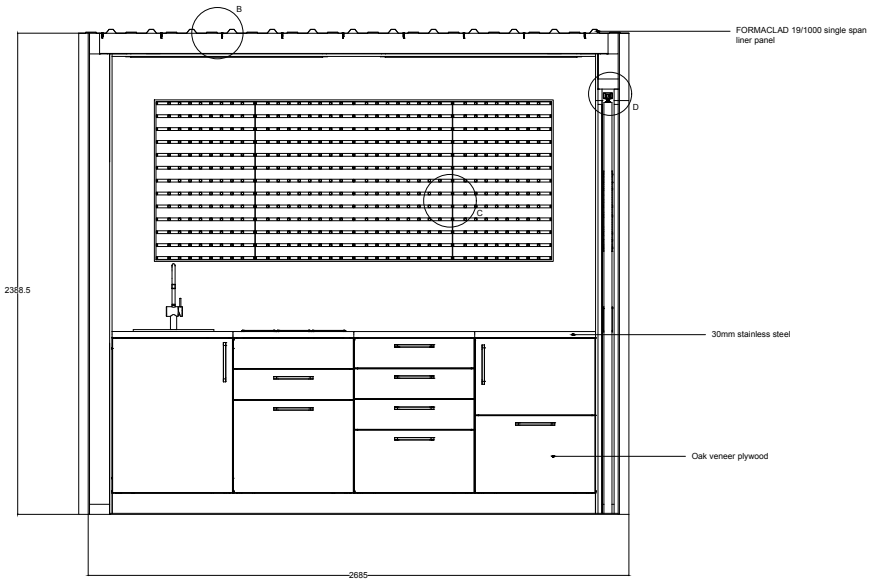
Portfolio

By Elsie Hill

GFree Traders: Final Year Project

AutoCAD Construction Detailing

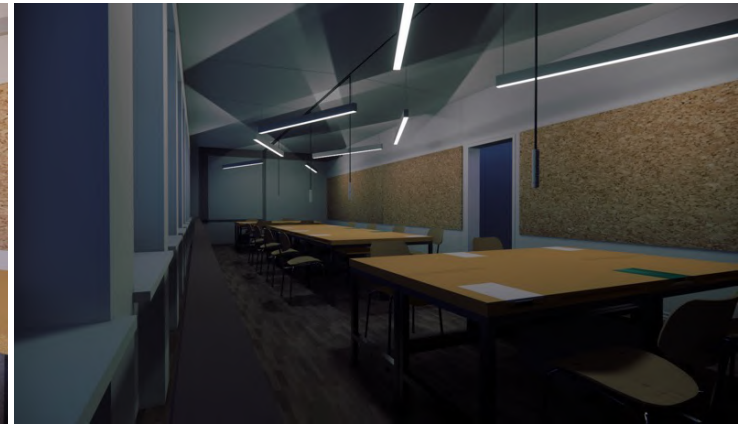
The gluten-free market that I designed was based in Dovecot Studios' which previously housed the Infirmary Street Baths. Once the overall design was finalised, the task was to select an area/component to detail. The main area of the market consists of seating, a central void and individual kiosks surrounding the perimeter. AutoCAD was the software used to create multiple section drawings of the kiosk; the detail of the design. Each section contains small details which were highlighted and labelled with materials and measurements in a separate set of construction drawings.



Exchange: 4me Möbelentwurf

Sketchup Modelling | Enscape Renders

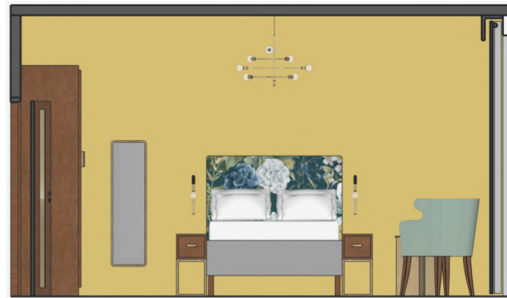
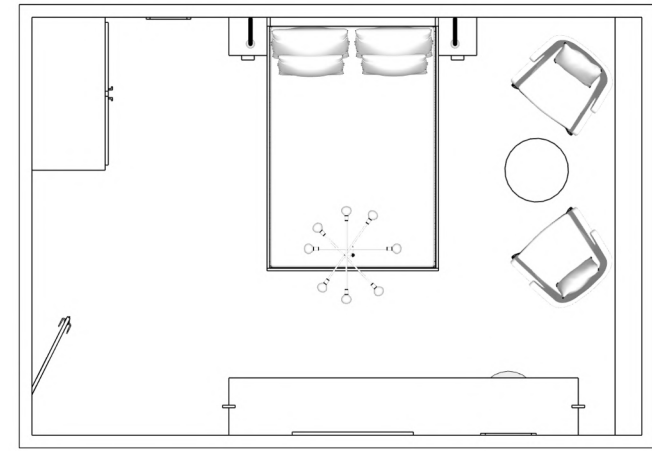
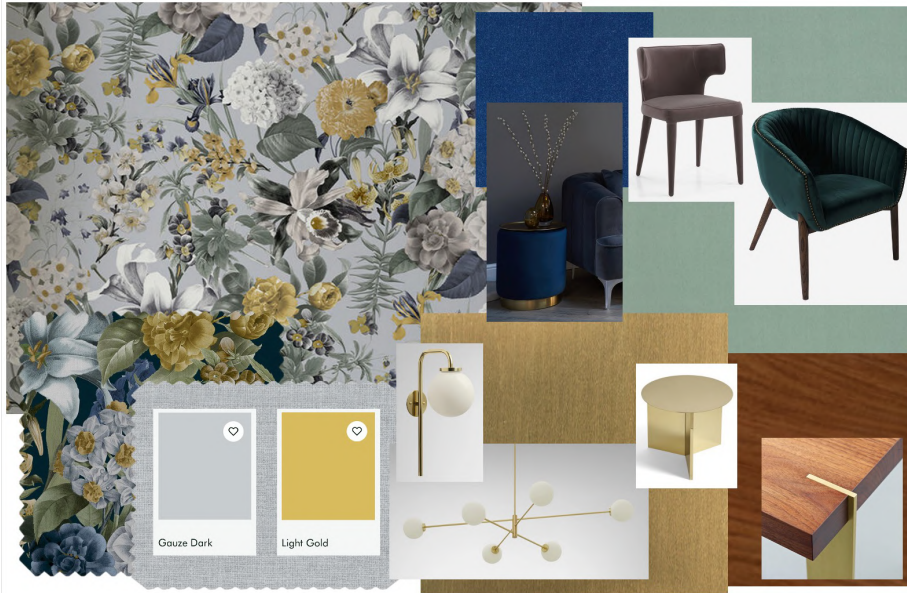
The course brief for 4me Möbelentwurf (furniture design) was to design a desk for the Innenarchitektur studio at Hochschule für Technik. The studio space and existing chairs were built using SketchUp. The remainder of the course focused on designing a desk which would be suitable for students to use when the studio was reopened. The Sketchup model is a design for a multifunctional desk. The Enscape renders display how each element functions and where the desks are positioned in the room along with the power supply and lighting arrangement.



Hotel Bedroom

SketchUp Modelling

I created my own brief to design a boutique style hotel bedroom. The mood board was created to highlight the importance of the floral fabric headboard and contrasting floral feature wall. The floor plan indicates furniture placement whilst the sections focus on the colour scheme, upholstered seating, walnut wood furniture, and lighting. The 1:1 SketchUp model displays detailed perspective views of the interior.



Exchange: History of Art

Photoshop Compositions

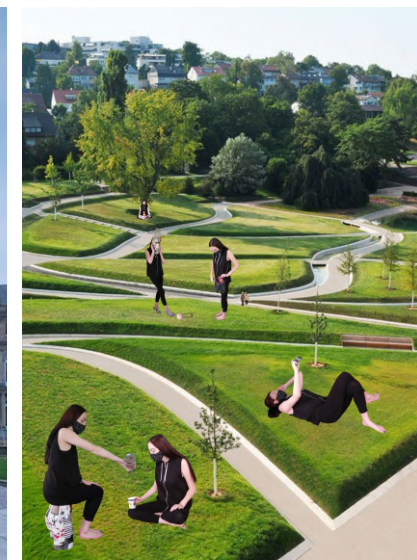
The task was to source household objects which could be interacted with. Based on previous visits to Stuttgart, I sourced images of public places and outdoor spaces which would feature as backgrounds for my collages. The aim was to create scenarios whereby I would interact with the chosen objects in various ways so that I would appear multiple times in each composition. The individual objects and interactions were photographed and edited in Photoshop. The background of each image was removed prior to scaling the edited version and placing it correctly in the foreground, midground or background of the different locations.



Staatsgalerie



Schlossplatz Square



Killesberg Park



Berliner Platz

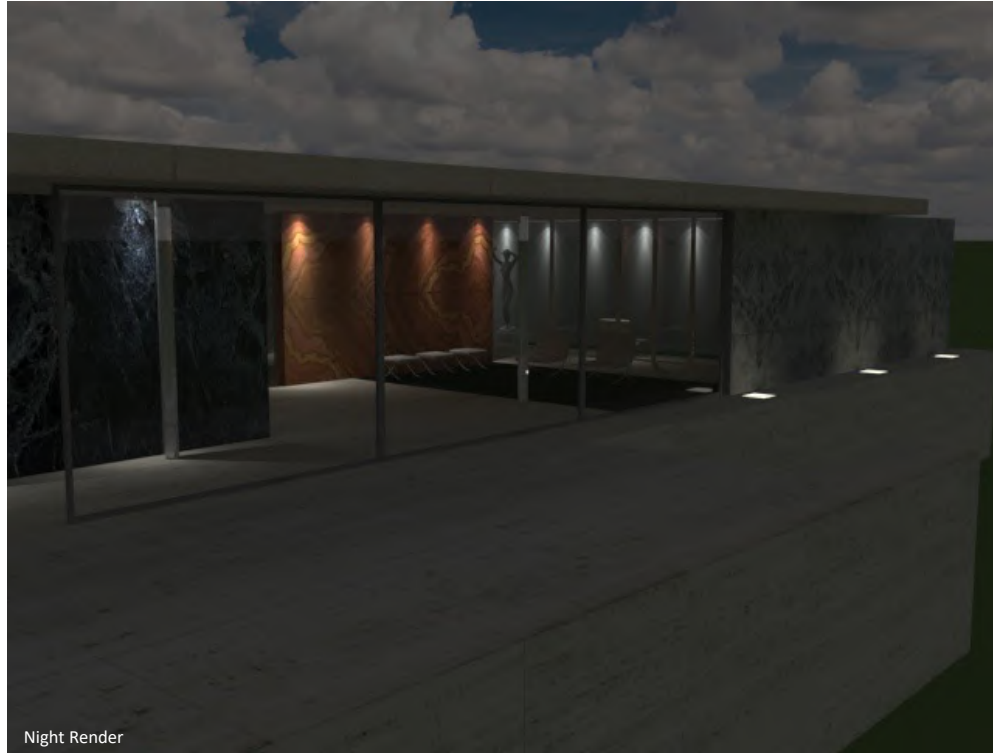


Weissenhof

3D Computer-Aided Design Visualisation

Sketchup Modelling | 3Ds Max Renders

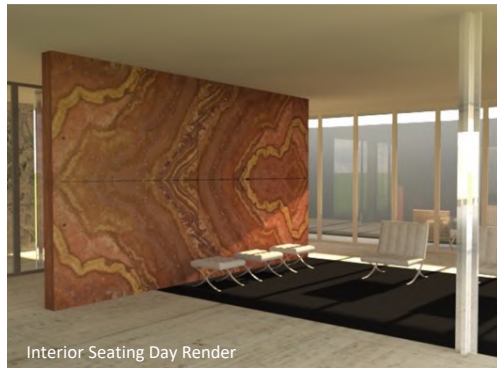
The software that was predominantly used for this project was 3Ds Max. Barcelona Pavilion was the site that had to be recreated using Sketchup. Following the sourcing and application of realistic 2D materials onto different surfaces of the pavilion, I exported the model into 3Ds Max. By using this software, I was able to set up and position multiple cameras in and around the model. Lighting was then added into the scene and sets of day and night renders were created from different angles.



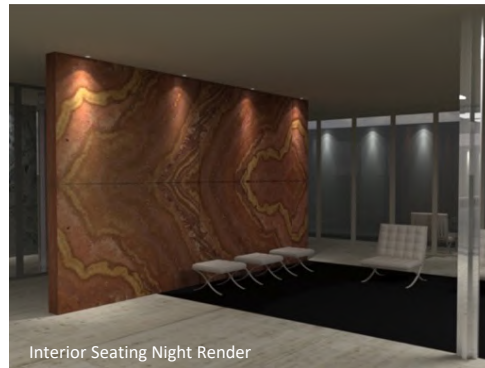
Night Render



Pavilion Exterior



Interior Seating Day Render



Interior Seating Night Render



Day Render Front View

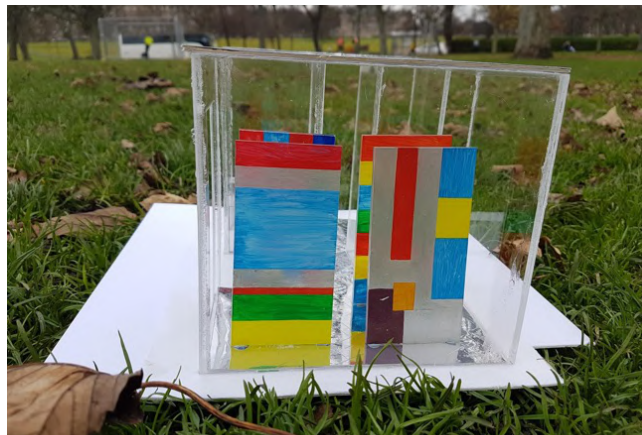


Night Render Front View

Materials Reimagined

Site Context | Modelling

The brief for this course was to design an outdoor pavilion which would be situated in the Meadows in Edinburgh. The main inspiration for my design was stained glass. The pavilion was built with multiple materials; perspex, MDF and mirrored card. The external structure was built using perspex and the furniture was made from MDF which was then covered in mirrored card along with the internal ceiling. The natural surroundings are reflected off of the mirrored surfaces whilst the perspex exterior makes the pavilion visible from all angles. The coloured perspex is the focal point of the pavilion as it contrasts with the clear exterior and reflective surfaces. Once my model was built, I visited the Meadows in Edinburgh to take some photographs of the pavilion in context.



Exchange: 4dd Lighting and Materials Sketchup Modelling | Enscape Renders

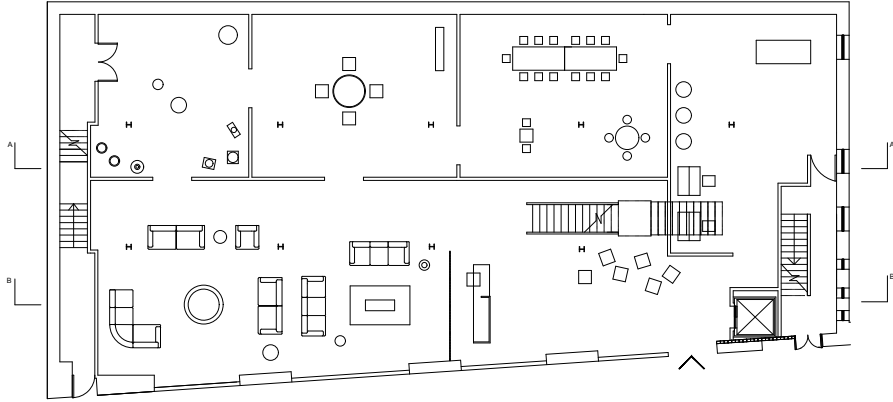
The task for 4dd Lighting and Materials was to recreate a scene from Casa Estudio designed by Luis Barragan. The model was built in Sketchup prior to adding furniture and materials into the scene to match the original photograph. The 3D model was exported into Enscape and lighting was inserted and positioned prior to the render.



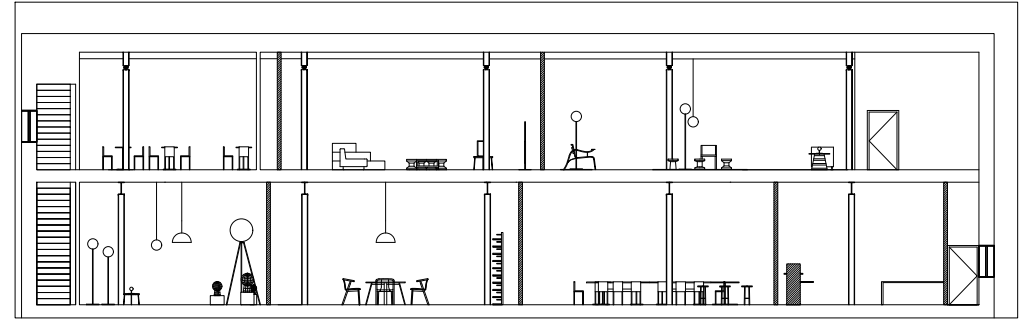
Change of Use

Technical Drawing

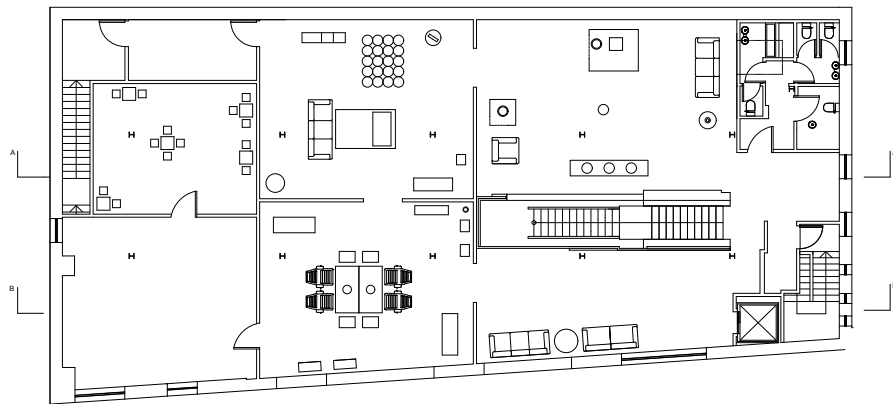
The software that was predominantly used for this project was AutoCAD. The Fruitmarket Gallery at 45 Market Street, Edinburgh was the site for project. The brief was to design a flagship store for my chosen designer, Jasper Morrison. Based on extensive research into the designer's background and his work, I had the task of renovating the interior of the gallery into a new retail space through change of use. Technical drawings were required to display the layout of both floors. Each space in the building was designed to function as a miniature exhibition of the designer's furniture and product collections.



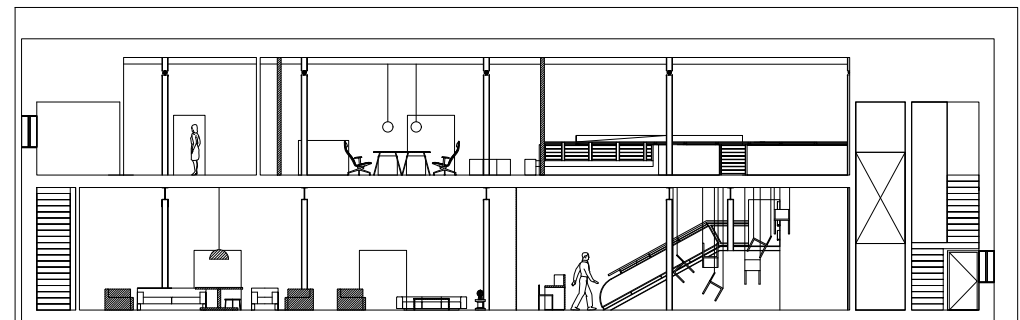
Ground Floor



Section A



First Floor

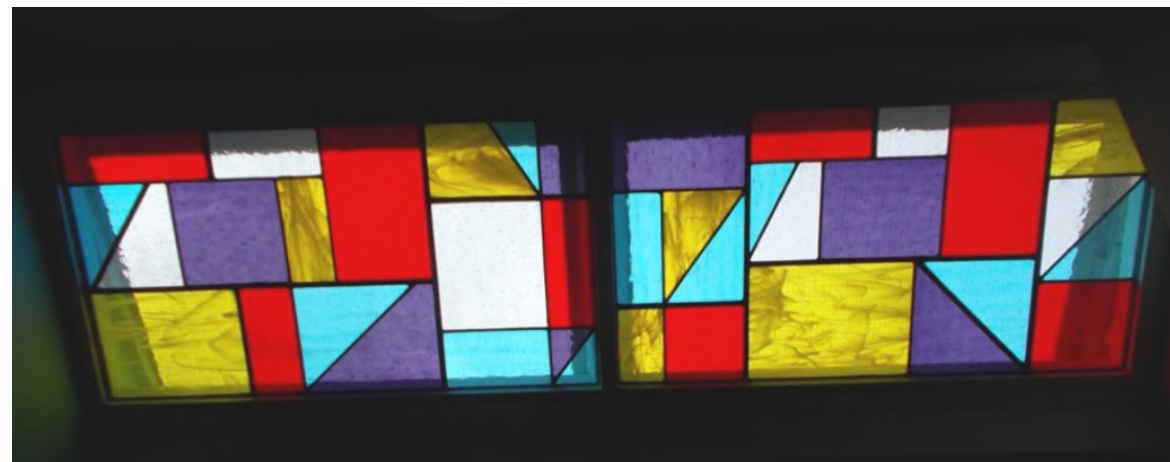
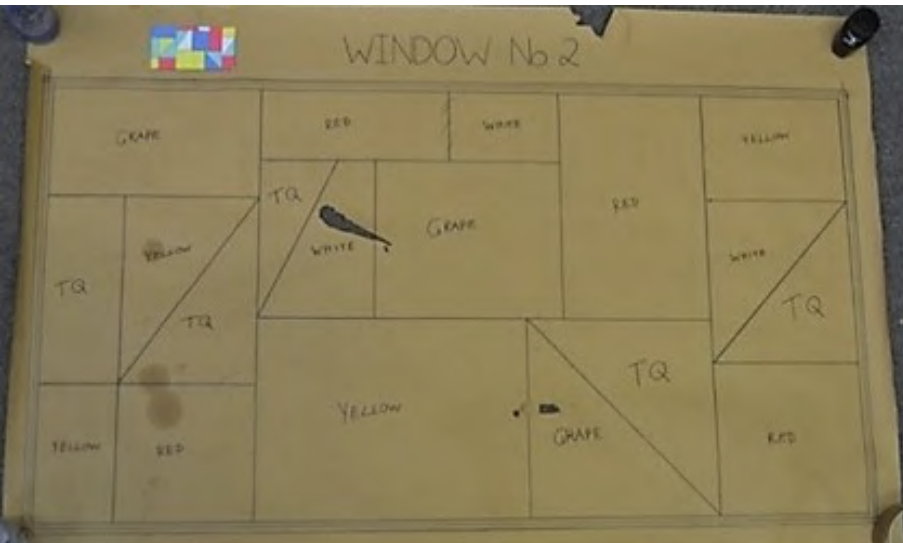
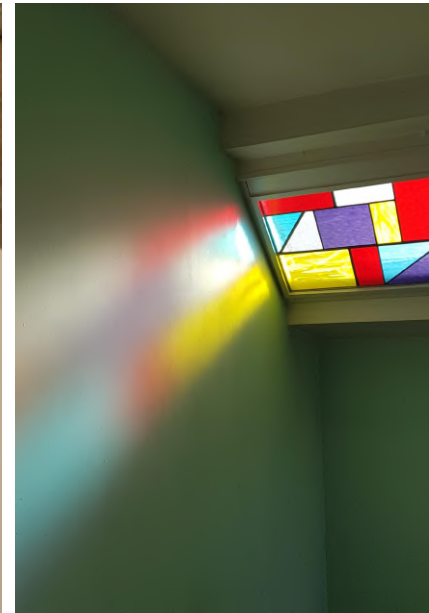
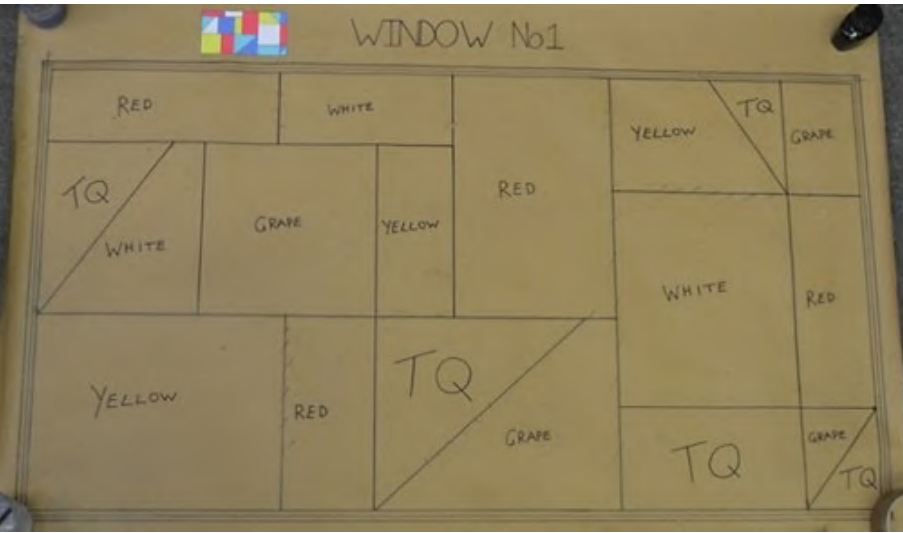


Section B

Stained Glass Window Installation

AutoCAD

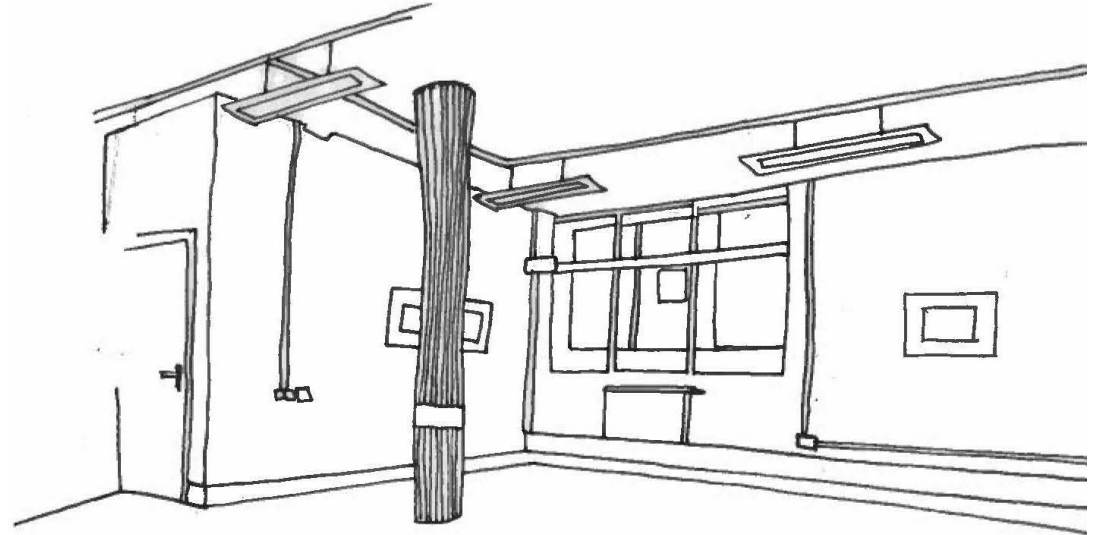
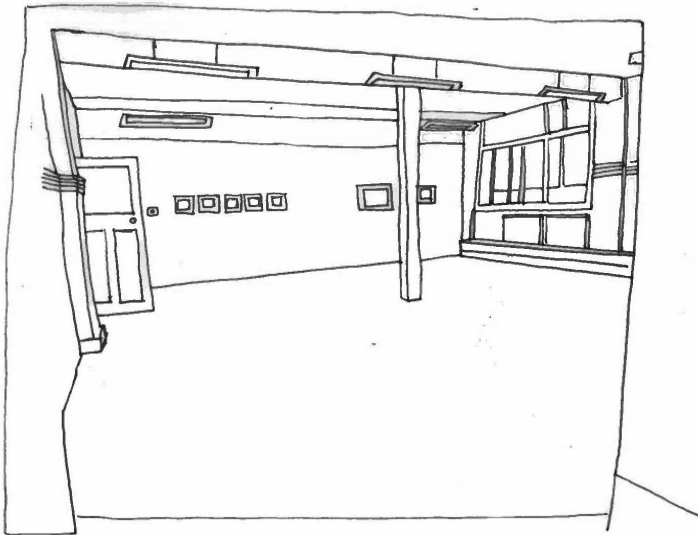
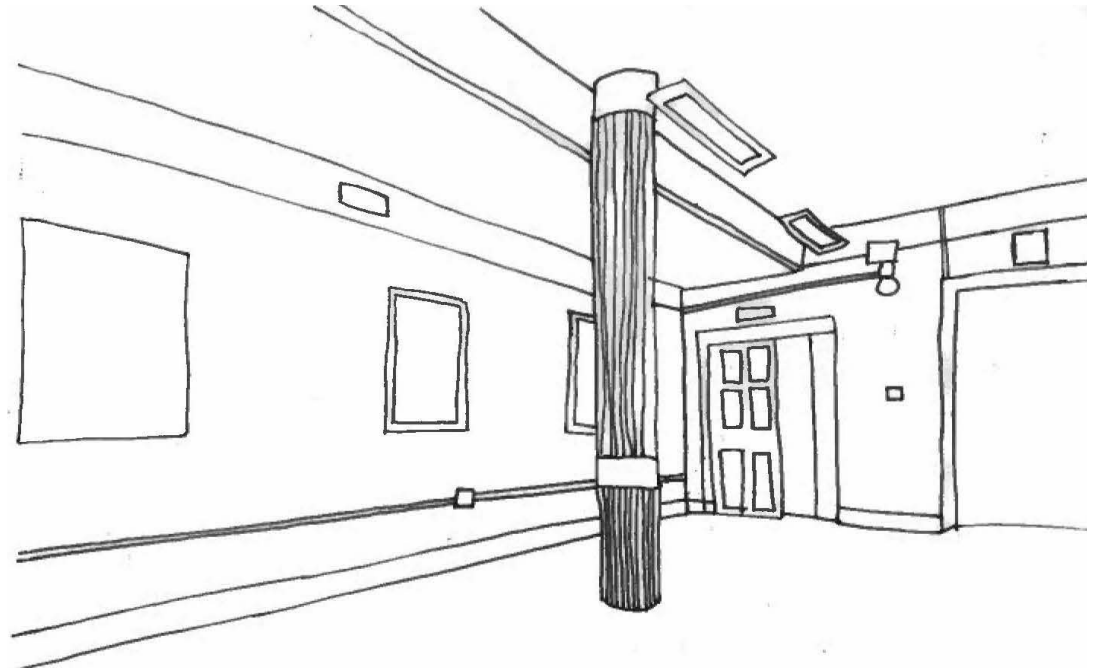
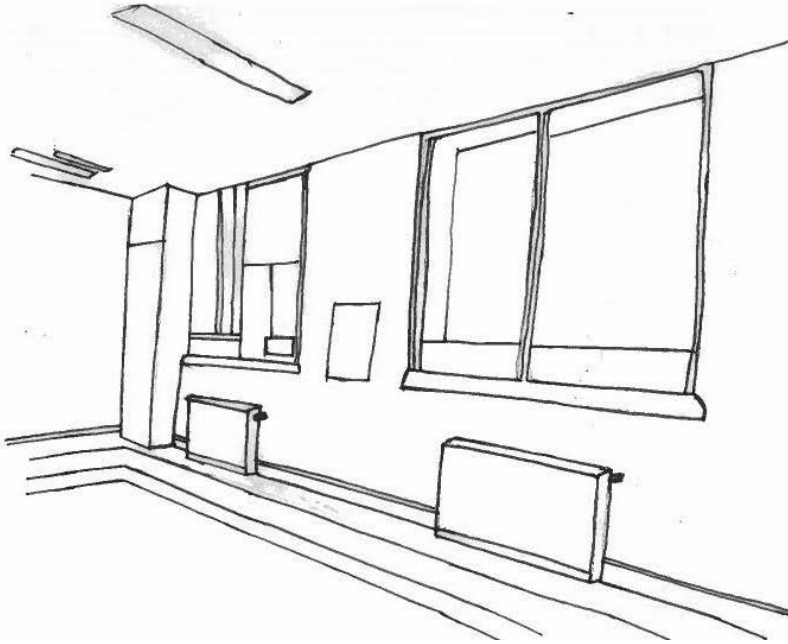
The window design was inspired by Bauhaus and De Stijl artist Piet Mondrian. The artist's basic style; known as Neoplasticism, uses geometric shapes, blocks of primary colours and black lines which vary in thickness. The window plans were drawn to scale and edited on AutoCAD before being replicated onto brown paper. I was involved in every stage of the project, from planning and drawing through to the manufacturing and installation of the final product. When visiting the workshop, I was able to see the glass samples and how the leading would be applied and manufactured. The workshop fabricator agreed to work from my hand-drawn plans in order to manufacture two unique stained glass windows which were fitted into my residence in Glasgow.



Summerhall

Site Visit Sketches

The aim of the course was to redesign two interiors in Summerhall located at 1 Summerhall Place, Edinburgh. The redesign had to include the addition of a café into the premise. The site visit provided an opportunity for key queries to be raised and addressed. Multiple sketches were produced during the site visit as a future reference to the primary structure.



Mannequin Painting

Sketching | Painting

The mannequin was bought from BHS in Glasgow prior to the stores permanent closure. Using white acrylic paint, I covered the model which initially had a dark grey central band. The design was hand drawn onto the mannequin with pencil as an outline for the final layer. Acrylic paints were used to colour the model and add depth to the finer details. The inspiration for the design was the Fado Vadio graffiti mural in Alfama, Lisbon. The mural was created by Movimento dos Amigos de Sao Cristovao; a local community group of graffiti artists. The mural celebrates traditional Fado folk music which originated in Lisbon.

